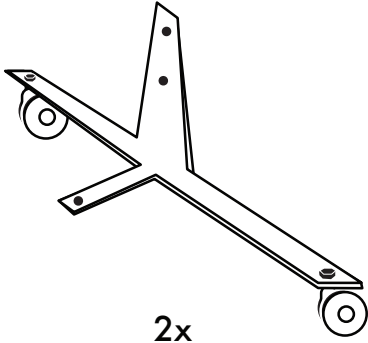
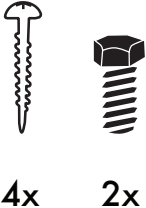
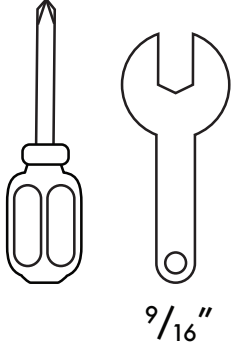
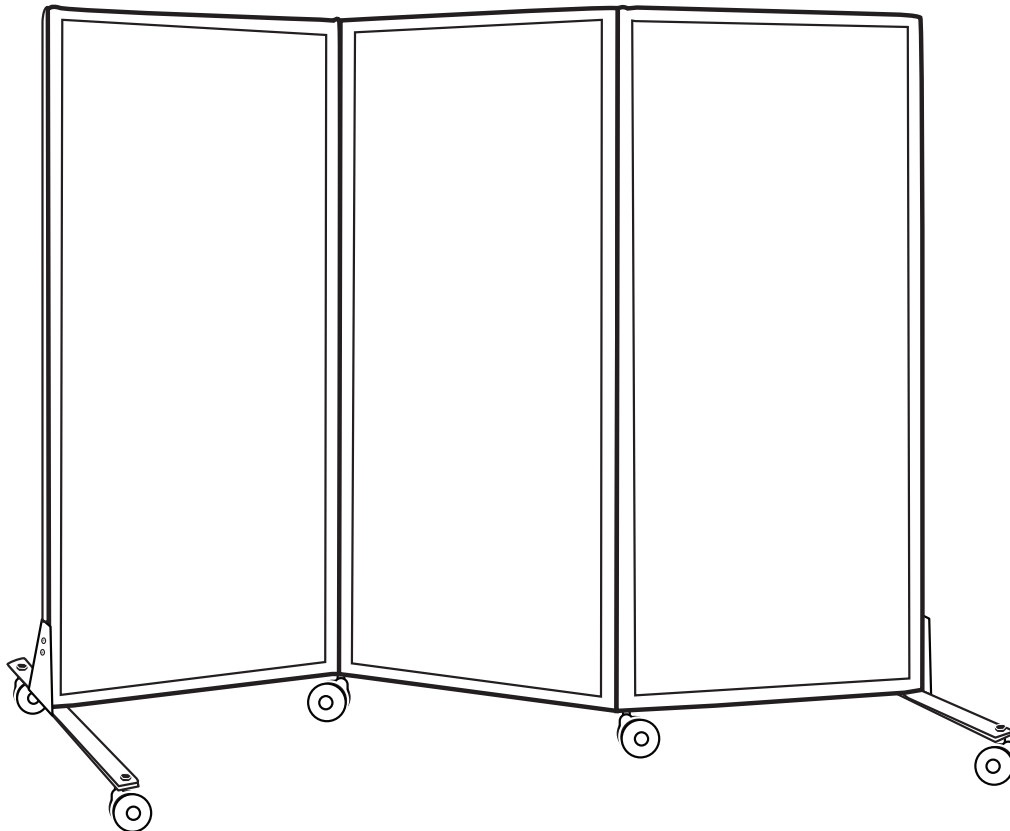
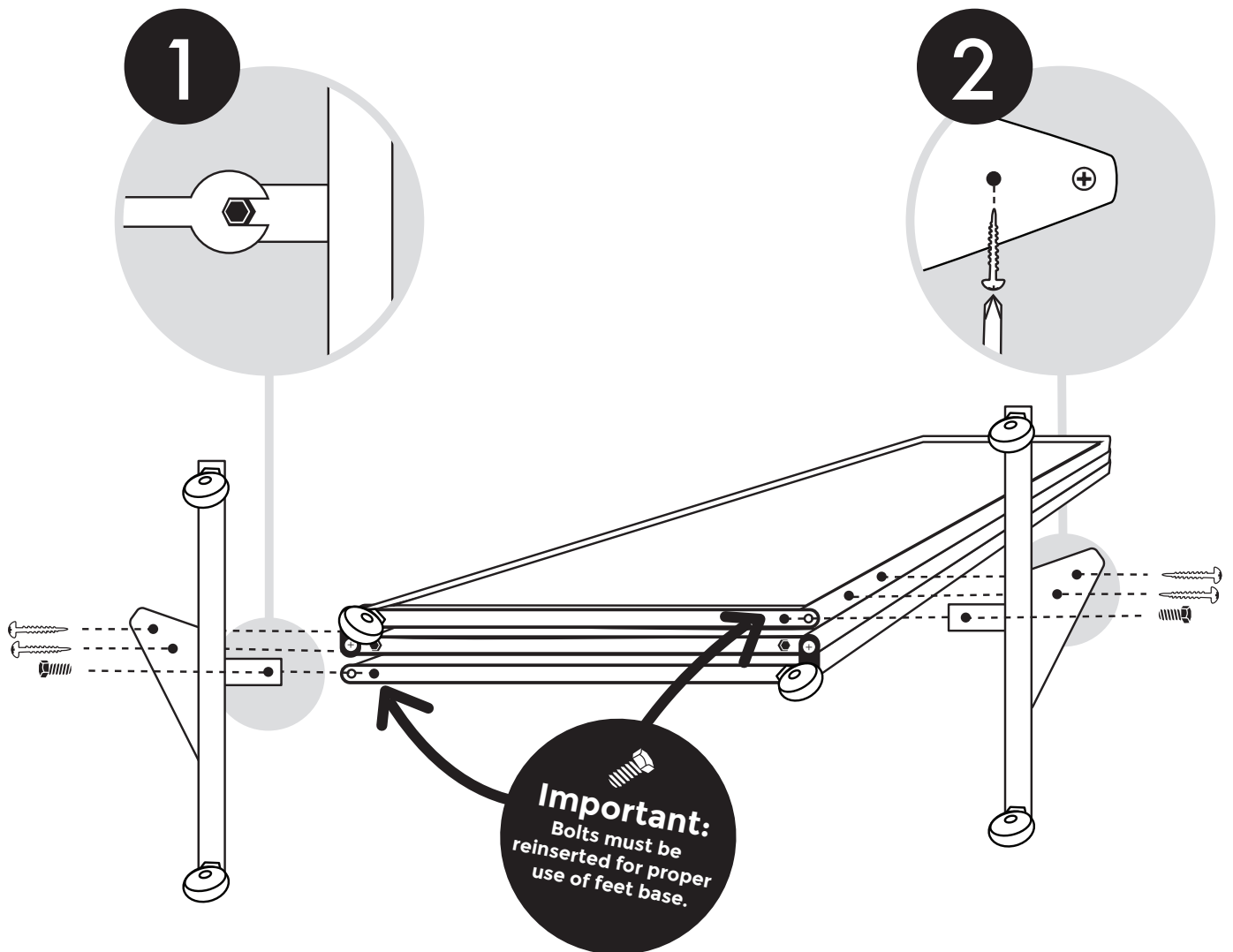


# QUICK-WALL (Folding)

 <p>2x</p>	<p>*Screws &amp; bolts arrive attached to partition.</p>	 <p>4x      2x</p>	 <p>9/16"</p>
<p>Parts Included</p>			<p>Recommended Tools</p>



Remove two bolts. Then attach feet base with bolts first, screws second.

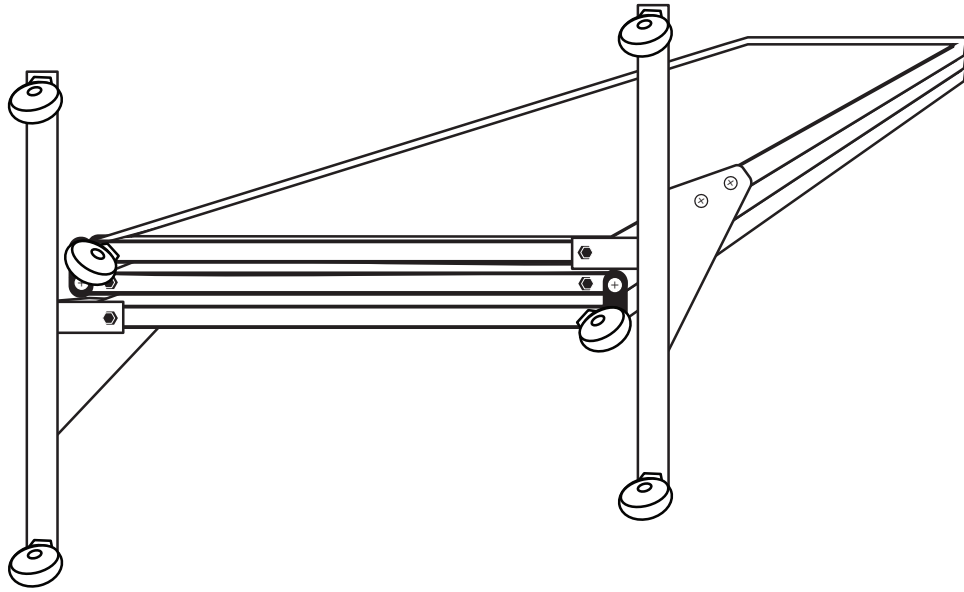


Ph: 9 570 3647

**VERSARE**

[www.versare.co.nz](http://www.versare.co.nz)

10 Rakino Way,  
Mt Wellington



**All complete!  
We hope you enjoy your new  
Quick-Wall!**

**If you have any questions on your  
Quick-Wall, please contact us at  
09 570 3647 or  
Chris@versare.co.nz**

Ph: 9 570 3647

**VERSARE**  
[www.versare.co.nz](http://www.versare.co.nz)

10 Rakino Way,  
Mt Wellington