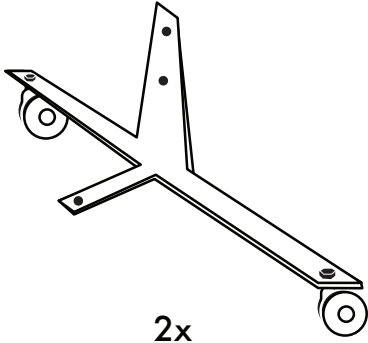
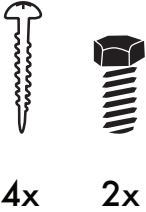
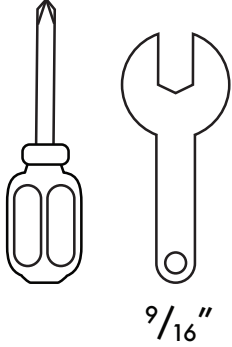
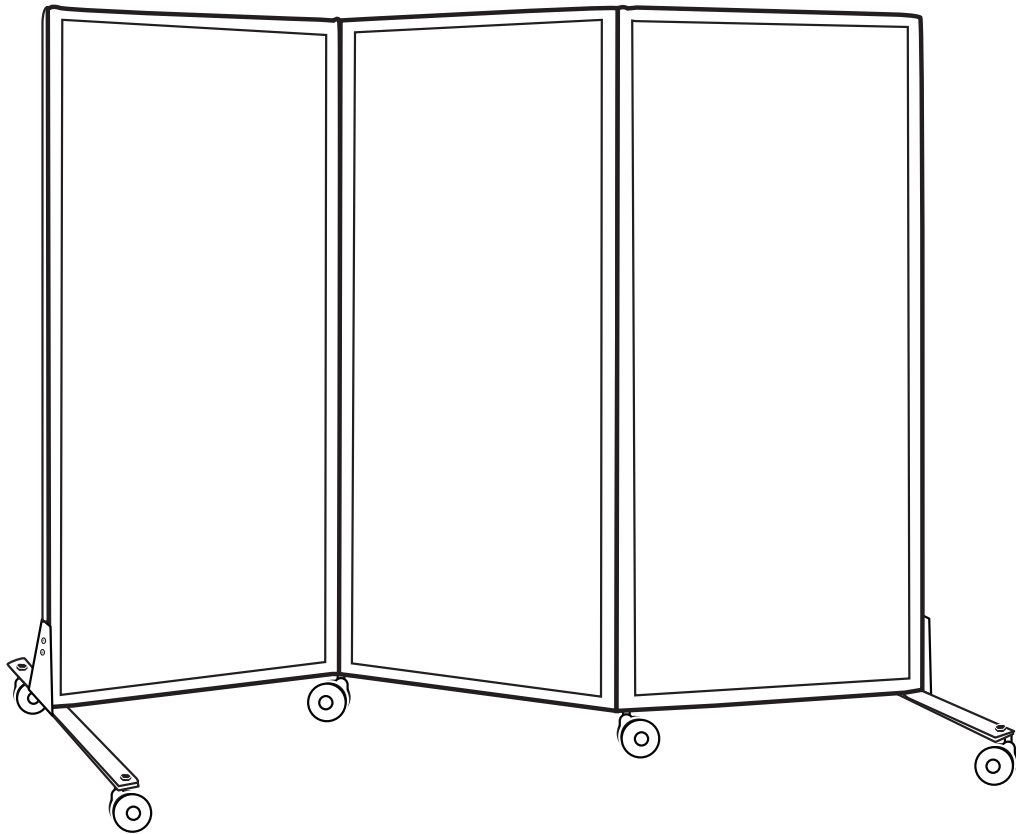


QUICK-WALL (Folding)

 <p>2x</p>	<p>*Screws & bolts arrive attached to partition.</p>	 <p>4x 2x</p>	 <p>9/16"</p>
<p>Parts Included</p>			<p>Recommended Tools</p>

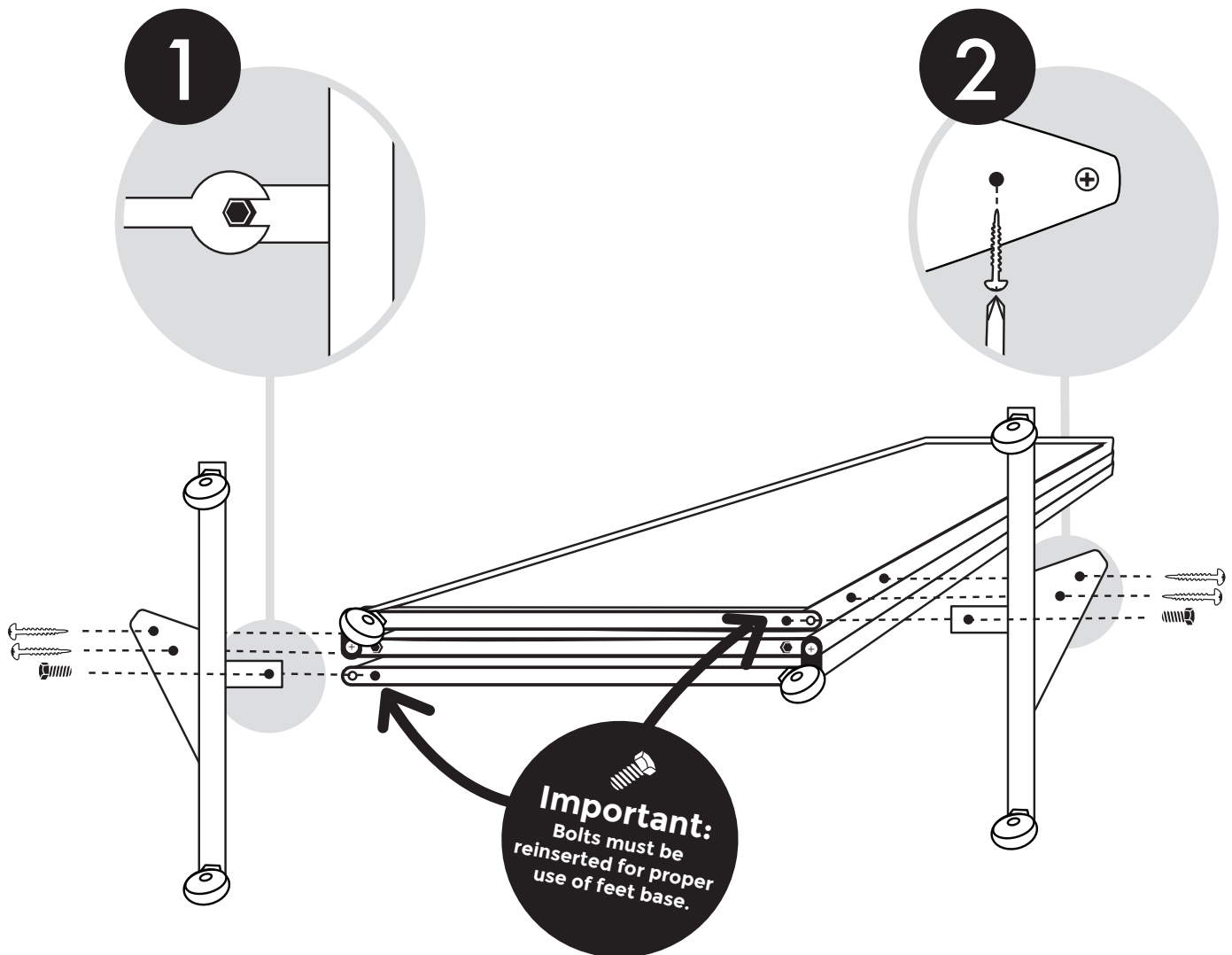


P: 1.800.830.0210
F: 1.800.310.4874

VERSARE
www.versare.com

3236 California St. NE
Minneapolis, MN 55418

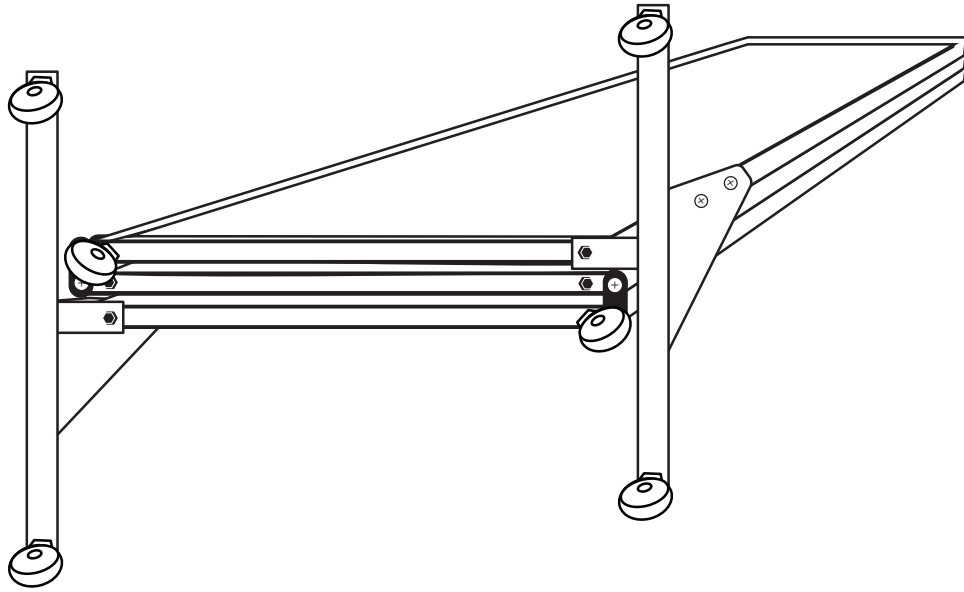
Remove two bolts. Then attach feet base with bolts first, screws second.



P: 1.800.830.0210
F: 1.800.310.4874

VERSARE
www.versare.com

3236 California St. NE
Minneapolis, MN 55418



**All complete!
We hope you enjoy your new
Quick-Wall!**

**If you have any questions on your Quick-Wall,
please contact us at
1.800.830.0210 or
customerservice@versare.com**



P: 1.800.830.0210
F: 1.800.310.4874

VERSARE
www.versare.com

3236 California St. NE
Minneapolis, MN 55418